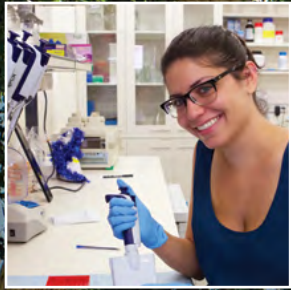


# American Friends of The Hebrew University 2013 Annual Report

# 2013









## A Message from AFHU Leadership

**A**merican Friends of The Hebrew University (AFHU) fostered the well-being of Israel during fiscal year 2013 by supporting cutting-edge research and academic programs at The Hebrew University of Jerusalem. AFHU's development efforts across seven U.S. regions enabled our organization to generate almost \$50 million in funds for university projects and priorities. This commendable level of support from the American philanthropic community propelled a broad spectrum of achievements ranging from bioengineered medical devices to eco-friendly methods of water purification. These types of innovations benefit humanity and improve the quality of life for people worldwide.

The Hebrew University is currently ranked 59th among the world's top 100 universities. Throughout 2013, our university received international attention for advances in medicine, the invention of new drug delivery platforms, major archaeological discoveries and international partnerships reflective of the university's global stature. On each of four campuses, scholars and scientists made noteworthy discoveries, some of which are described in this year's AFHU Annual Report.

During 2013, AFHU spearheaded events, educational forums, missions to Israel and galas that raised awareness of, and funds for, university endeavors. Our multimillion dollar campaign drew its success from the commitment of American Friends who generously contributed to the university's recruitment of brilliant new faculty. Significant support led to the creation of student scholarships. AFHU Torch of Learning events showcased the university and raised funds for its acclaimed Faculty of Law. Scopus Award galas dedicated their proceeds to important work at The Harry S. Truman Research Institute for the Advancement of Peace and the Elite Military Medicine Track at the Faculty of Medicine. At The Hebrew University's 76th International Board of Governors meeting, esteemed American Friends were honored for their achievements and philanthropy.

We are pleased to report that The Alexander Grass Center for Bioengineering at Hebrew University has been named in honor of the Alexander Grass Foundation, champions of pioneering interdisciplinary science and technology. Groundbreaking took place for The Charles and Suzanne Goodman Brain Sciences Building, which will house the Edmond and Lily Safra Center for Brain Sciences. A transformative



Michael S. Kurtz  
Chairman of the Board



Daniel I. Schlessinger  
President



Peter T. Willner  
National Executive Director

grant from the Mandel Foundation is enabling the establishment of The Jack, Joseph and Morton Mandel School for Advanced Studies in the Humanities, with a spacious new building being constructed to accommodate high-level interdisciplinary research.

AFHU has a comprehensive governance structure responsible for oversight. Our lay and professional leaders work closely to assure financial transparency, fiscal soundness and fine-tuned organizational operations. AFHU's regional and national boards, Management Committee and Budget and Finance Committee met regularly throughout 2013. Our Investment Committee monitored and periodically adjusted asset allocations for AFHU's multimillion dollar endowment, adhering to stringent policies and procedures. Under strong leadership, our endowment is growing, and the investment income is helping The Hebrew University to thrive.

To enhance our effectiveness, AFHU hired talented new executive directors in San Francisco and the Greater New York Region. We hired our first Director of Alumni Development to begin reaching out to Hebrew University alumni from coast to coast. We implemented a robust planned giving program. AFHU developed a brand image advertising campaign that positions The Hebrew University of Jerusalem as *Research Engine for the World. Engine of Growth for a Nation*. We embarked on an appealing website redesign that will be optimized for mobile devices.

Our lay leaders and professional staff feel deeply connected to The Hebrew University of Jerusalem and Israel's future. Working side-by-side with our dear friends and colleagues at the university, we remain dedicated to advancing Israeli-led innovation and higher education, mindful of the legacy we are building now and for generations to come.

Michael S. Kurtz  
Chairman of the Board

Daniel I. Schlessinger  
President

Peter T. Willner  
National Executive Director

## Research and Program Highlights

### HU Initiates Israel's First In-Flight Call With Astronaut in Space



On October 24, 2013, Hebrew University students took part in Israel's first in-flight call with astronauts on the International Space Station (ISS). The live video linkup connected high school and university students gathered at the Wise Auditorium with Italian astronaut **Luca Parmitano** on the ISS. The students heard about life in space and were able to ask questions of Parmitano.

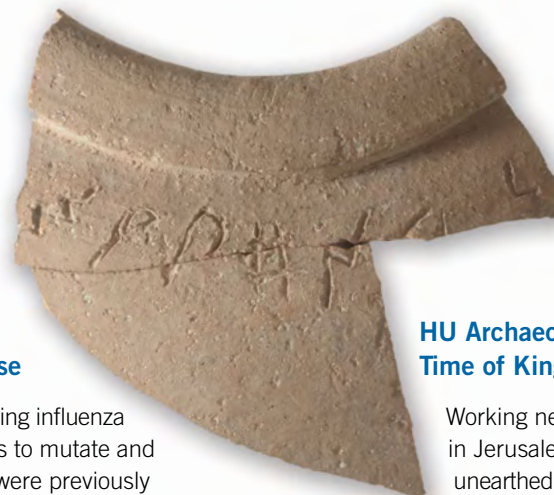
Italian astronaut  
Luca Parmitano

### Boosting the Body's Ability to Fight Disease

A known difficulty in fighting influenza is the ability of flu viruses to mutate and evade medications that were previously found to be effective. Ph.D. student **Yotam Bar-On** and **Ofer Mandelboim**, the Dr. Edward Crown Professor of General and Tumor Immunology at the Lautenberg Center for Immunology and Cancer Research, revealed in a paper published in *Cell Reports* (Volume 3, 2013) that the influenza virus is able to evade the activity of Natural Killer (NK) cells, allowing the virus to spread in the respiratory system. Their research stresses that scientific efforts should focus on developing effective new drugs that could maintain and enhance NK cell activity, which has disease-fighting power.



(L-R) Professor Ofer Mandelboim and Ph.D. candidate Yotam Bar-On



### HU Archaeologists Uncover Inscription From the Time of Kings David and Solomon

Working near the Temple Mount in Jerusalem, **Dr. Eilat Mazar** unearthed the earliest alphabetical written text ever uncovered in the city. The inscription is engraved on a large pithos — a ceramic jar found with six others at the Ophel excavation site. According to Dr. Mazar, the inscription, in the Canaanite language, is the only one of its kind discovered in Jerusalem. Dated to the tenth century B.C.E., the artifact predates by 250 years the earliest known Hebrew inscription from Jerusalem.



Dr. Eilat Mazar

### Delivering Safer Drugs Through Skin Application

Drug formulations designed to treat illnesses through skin applications can avoid some of the side effects associated with oral drug-taking. These formulations are being developed by **Marganit Cohen-Avrahami**, a Ph.D. candidate mentored by **Professor Nissim Garti** and **Dr. Abraham Aserin** of the Casali Institute of Applied Chemistry. Her method utilizes skin-permeable proteins that are inserted into nano-structured gels. Through skin application, the liquid gels can reach the injured area, releasing medication in a controlled manner.



Ph.D. candidate  
Marganit Cohen-Avrahami



## The Hebrew University of Jerusalem Research and Program Highlights

### HU and Coursera Partner to Offer Free Online Courses to Anyone, Anywhere

The Hebrew University joined leading universities in the U.S. and elsewhere in signing an agreement with **Coursera** to offer free online courses. The initiative enables millions of people worldwide to learn from Hebrew University faculty who are leaders in their fields. **Dr. Yuval Noah Harari**, an expert in world history and military history, instructed the inaugural HU Coursera course titled *A Brief History of Humankind*. **Dr. Yaakov (Koby) Nahmias**, Director of the Alexander Grass Center for Bioengineering, led *An Introduction to Tissue Engineering*.



Dr. Yuval Noah Harari teaches online.



### Aquarium Fish Enjoy Clean Waters Thanks to Eco-Friendly Solution

The **Yisum Research Development Company** of The Hebrew University commercialized an environmentally-friendly biological solution for purifying water in aquariums. The technology uses certain bacteria as novel bio-filters to reduce nitrate levels in both freshwater and seawater aquariums. The innovation was developed by leading researchers at the **Robert H. Smith Faculty of Agriculture, Food and Environment: Professor Amos Nussinovitch, Professor Jaap van Rijn and Dr. Yosef Tal**. The invention can improve water quality for a wide range of aquarium fish, extending their life expectancy. The efficiency of the novel technology was demonstrated in commercial aquariums.



### NBA Star Joins Forces With Hebrew University's Youth Center for Advanced Studies

**New York Knicks** star **Amar'e Stoudemire**, while visiting Israel to coach the Maccabi Canada basketball team competing in the Maccabiah Games, joined forces with **The Hebrew University's Youth Center for Advanced Studies**. The Center has launched an important program dedicated to children from peripheral areas in Israel. Youngsters from grades 3–12 learn science and other academic fields through sports.

Amar'e Stoudemire



PHOTO: Steve Russell / Toronto Star.  
Used with permission

## The Hebrew University of Jerusalem Research and Program Highlights

*SEER “knows” whom  
you’re calling next.*



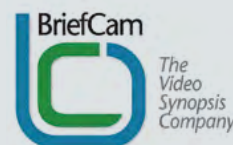
### Smartphones Get Smarter

**SEER** is a novel application for predictive speed dialing for smartphones. It is based on an innovative machine-learning algorithm that utilizes the user’s past behavior and the context of the call to predict the next outgoing call. The contacts that the user is most likely to call next are displayed on the home screen and are constantly updated, enabling the user to easily make a call with just one click.

**Yisum**, Hebrew University’s technology transfer company, is working with Hebrew University scientists to commercialize SEER. The machine-learning algorithm was invented by **Assif Ziv** and **Ohad Assulin** as part of their studies in the Cognitive Science Department. The mobile application was developed by Assif Ziv, Hebrew University alumnus **Tomer Weller** and **Yinon Masad**.

### New BriefCam® Product Offers Enhanced Video Synopsis

**BriefCam®**, a startup company founded by Hebrew University **Professor Shmuel Peleg**, develops and provides video synopses for the rapid review and analysis of surveillance video.



**BriefCam Syndex®**, a new product based on the company’s award-winning technology, offers a powerful set of tools for an accelerated and targeted review of copious video footage. BriefCam Syndex enhances basic video synopsis by allowing users to search video according to size, color, speed, direction and the location of images within the frame.

*Below, BriefCam’s new technology  
allows surveillance video to be...*



 *reviewed by subjects’ color...*



 *reviewed by subjects’ direction...*



 *reviewed by subjects’ size.*



**The Hebrew University of Jerusalem**  
**Research and Program Highlights**

## The Glocal Community-Development Studies Program

**Glocal** is an interdisciplinary Master's degree program that provides Hebrew University graduate students with knowledge of the latest academic research and combines this awareness with overseas internships that build practical skills related to community development. Glocal students work with international NGOs to assist people in developing countries. The program is administered by The Federmann School of Public Policy and the Gilo Center for Citizenship, Democracy and Civic Education.

On April 11, 2013, students and alumni of Glocal participated in an educational event where they described their experiences as interns. The event included a photo exhibit and a mini-conference focused on community development.



*Portrait of Salamatou Ibrahim in her home in Benitunga-Karimama, near the Niger border*

PHOTO: Anne-Sophie Cardina

## Hebrew University Professor and American Police Chief Improve Police Relationship With Community

**Dr. Barak Ariel**, an assistant professor at The Hebrew University Institute of Criminology, teamed with Rialto, California, **Police Chief William Farrar**, to equip Rialto police officers with wearable cameras.



This measure aimed both to decrease the number of citizen complaints lodged against police officers, and to decrease the number of incidents in which police use force. This study was featured in *The New York Times* (April 6, 2013), where it was revealed that the first twelve months of the study saw an 88% decline in the number of complaints filed against participating officers.

## Chinese Students Learn Hebrew at The Rothberg International School

In an effort to foster ties with Chinese universities and encourage study in Jerusalem, The Hebrew University awarded scholarships to Chinese students enrolling in the **Rothberg International School Jerusalem Ulpan**. Scholarships were also given to Chinese students enrolled in the Rothberg International School's MA program in Islamic and Middle Eastern Studies. These scholarships were made possible, in part, thanks to grants received from the Council for Higher Education in Israel.



## German Institutions and HU Establish Joint Doctoral Program on Human Rights

The **German Research Foundation** approved a 4.5 million euro grant for the establishment of a new international research training group to study contemporary challenges to the pursuit of human rights.

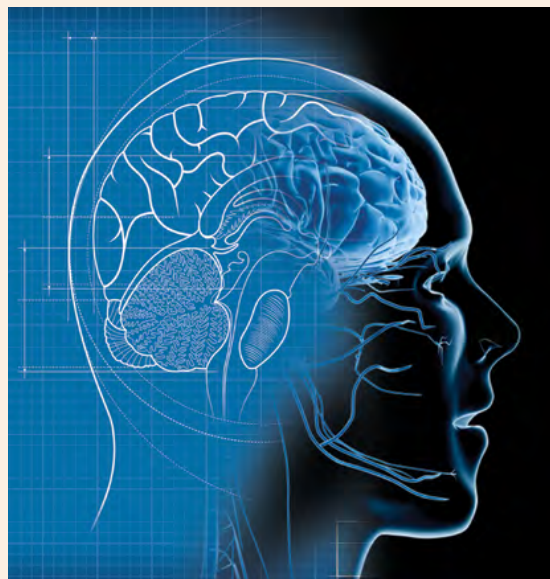
**Human Rights Under Pressure — Ethics, Law and Politics**, is a joint interdisciplinary doctoral and research program carried out in cooperation between the Freie Universität Berlin and the Minerva Center for Human Rights at Hebrew University's Faculty of Law. The program will enable doctoral students from Berlin and Jerusalem to participate in a comprehensively structured Ph.D. program.



## Accolades for Discovery and Achievement

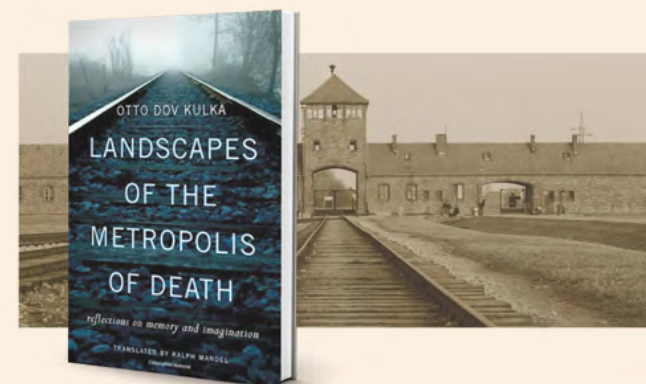
### ELSC Professor Wins First Annual Mathematical Neuroscience Prize

**Haim Sompolinsky**, the William N. Skirball Professor of Neuroscience at the Edmond and Lily Safra Center for Brain Sciences (ELSC), was awarded the first **Annual Mathematical Neuroscience Prize** by **Israel Brain Technologies (IBT)**, a non-profit organization committed to advancing Israel's neurotechnology industry and establishing the country as a global hub of brain technology innovation. The \$100,000 award honors researchers worldwide who have advanced scientific understanding of the neural mechanisms of perception, behavior and thought through mathematical analysis and theoretical modeling.



### Professor of Jewish History Wins German Literary Prize

Historian **Otto Dov Kulka**, Professor Emeritus at the Mandel Institute of Jewish Studies, won the **Geschwister Scholl Prize** for 2013. The prize is presented annually in recognition of a new book that reflects a spirit of intellectual independence and courage, while providing important stimulus for galvanizing a sense of responsibility for the historical present and its challenges. Professor Kulka's book is titled ***Landscapes of the Metropolis of Death — Auschwitz and the Limits of Memory and Imagination***.



### Ten HU Scholars Inducted Into Prestigious Academy of Sciences and Humanities

Ten young Hebrew University faculty members were inducted into the new **Young Israel Academy of Sciences and Humanities** created by the Israel Academy of Sciences and Humanities. The new academy is comprised of Israeli researchers up to age 45 who have demonstrated originality of thought, research excellence and have been awarded elite research grants. Inductees include: **Dr. Yuval Noah Harari**, **Professor Orit Kedar**, **Professor Re'em Sari**, **Dr. Roie Yrushalmi**, **Professor Ariel Knafo**, **Dr. Pawel Maciejko**, **Professor Michal Feldman**, **Dr. Sharon Zuckerman** and **Professor Edit Tshuva**.



### The Sir Zelman Cowen Universities Fund Prize Awarded for Pioneering Medical Research

**Professor Eran Meshorer** of the Alexander Silberman Institute of Life Sciences was awarded the **2013 Sir Zelman Cowen Universities Fund Prize for Medical Research**. The award recognized Professor Meshorer's groundbreaking research concerning pluripotency — the ability of embryonic stem cells to renew themselves indefinitely and to differentiate into all types of mature cells. A more thorough understanding of pluripotency may enable scientists to replicate the process and create cells in the laboratory that could be implanted in humans to treat diabetes, age-related macular degeneration, dementia and Parkinson's disease.



*Professor Eran Meshorer*





### HU Researcher Chairs First Pan-European Coalition to Prevent Femicide

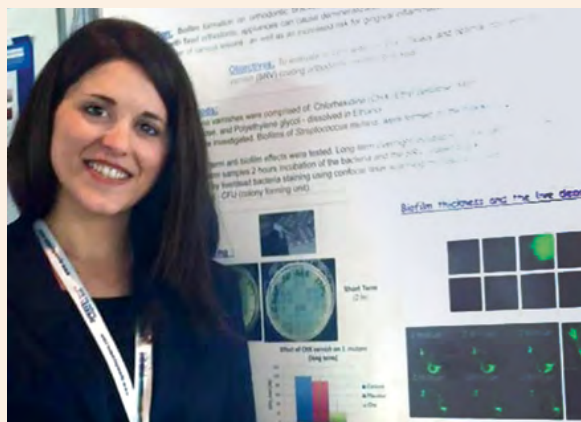
**Cooperation in Science and Technology (COST)**, an intergovernmental framework for European Cooperation in Science and Technology, sponsored the establishment of a pan-European coalition proposed and chaired by **Dr. Shalva Weil**, Senior Researcher at the NCJW Research Institute for Innovation and Education at The Hebrew University. The coalition will focus on the issue of femicide. Collaborating researchers already studying the phenomenon in various cultures will work to establish clear definitions, improve policies for femicide prevention and publish guidelines for use by national policy makers.



*Dr. Shalva Weil*

### Greek Biomedical Science Student at HU Wins First Prize For Dental Remedy

**Georgia Kotantoula**, a Greek student enrolled in Hebrew University's International Master's in Biomedical Science program, earned first prize at an international competition organized by the **European Association of Orthodontists**. Kotantoula, one of 500 participants, presented a remedy she developed to moderate the release of materials designed to prevent the accumulation of surface bacteria that cling to hard surfaces, such as teeth. Her cavity-prevention remedy emerged from a collaboration between HU's School of Pharmacy and Faculty of Dental Medicine. The new treatment has been patented by **Yissum**.



*Georgia Kotantoula and her award-winning work*



*Professor Michal Biran*



*Professor Eva Illouz*

### The Anneliese Maier Research Award for Humanities and Social Sciences

Germany's Alexander von Humboldt Foundation awarded the **Anneliese Maier Research Award** to **Michal Biran**, the Max and Sophie Mydans Foundation Professor in the Humanities, and to **Professor Eva Illouz** of the Department of Sociology and Anthropology. Each Hebrew University scholar received a 250,000 euro prize in furtherance of her research.

The award will fund the collaborations of Professors Biran and Illouz with their German research partners over a five-year period. The Alexander von Humboldt Foundation promotes academic cooperation between excellent scientists and scholars from Germany and other countries.



## THE HEBREW UNIVERSITY OF JERUSALEM

# International Collaborations

*During fiscal year 2013, The Hebrew University of Jerusalem signed more than 150 agreements for joint projects with universities worldwide and established 25 agreements for student exchanges with 14 countries. These joint endeavors bring students and faculty to Israel and affirm our interconnected global academic and research community.*

### A Research Consortium in Pediatric Medicine



A partnership to advance pediatric medicine was launched between the **Children's Hospital of Philadelphia, Drexel University** and **The Hebrew University's School of Pharmacy**, which celebrated its 60th anniversary in 2013. This interdisciplinary collaboration provides researchers with a unique opportunity to work toward breakthroughs in pediatric pharmacology and provide therapeutic solutions to unmet medical needs. Hebrew University's extensive research capabilities will be instrumental in translating basic science into practical applications that will help youngsters worldwide.



*L–R: HU Professor Simon Benita, Dr. Steven M. Altschuler, Jerusalem Mayor Nir Barkat, Philadelphia Mayor Michael Nutter, HU President, Professor Menahem Ben-Sasson and Drexel President John A. Fry*

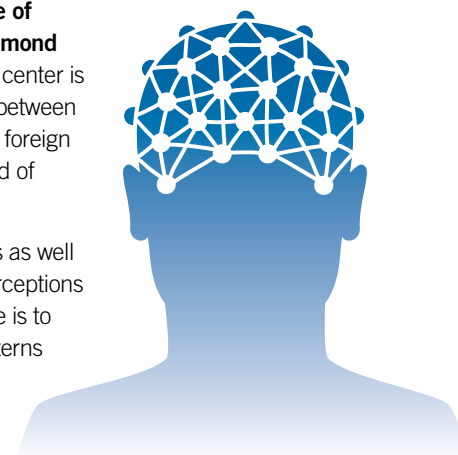
### The Max Planck-Hebrew University Center for Brain Research



*L–R: HU Professor Idan Segev, Professor Peter Gruss, HU Professor Eilon Vaadia and Professor Tobias Bonhoeffer*

**The Max Planck-Hebrew University Center for Sensory Processing of the Brain in Action** is bringing together scientists from Germany's **Max Planck Institute of Neurobiology** and **The Hebrew University's Edmond and Lily Safra Center for Brain Sciences**. The center is one of only 11 such international partnerships between Germany's leading research organization and a foreign research institution, and the only one in the field of brain research.

Senior scientists will study individual nerve cells as well as circuits of cells and analyze how sensory perceptions are processed in the brain. Their main objective is to determine how perceptions and behavioral patterns influence each other.

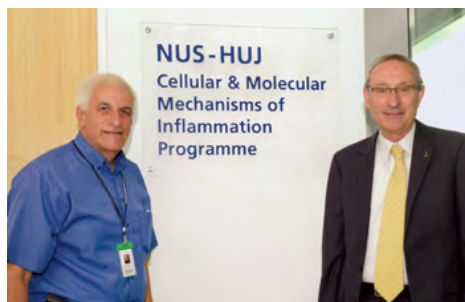




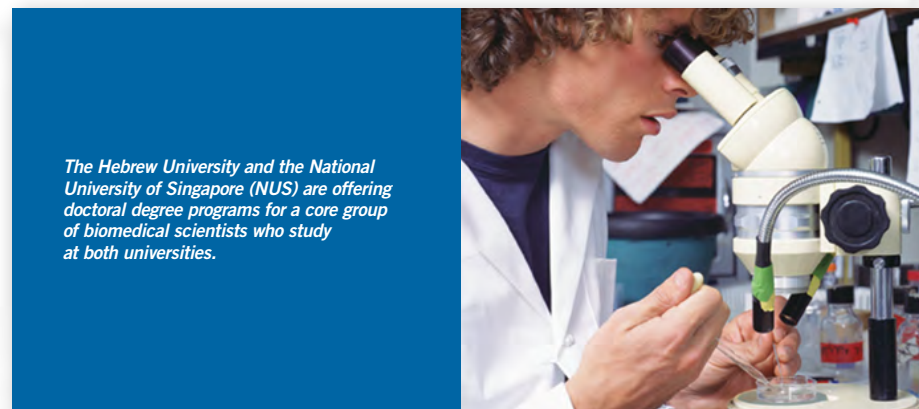
## The Hebrew University of Jerusalem International Collaborations

### A Joint Ph.D. in Biomedical Science

An international doctoral degree program offered by **The Hebrew University** and the **National University of Singapore (NUS)** is training a core group of biomedical scientists who study at both universities. This is the third such partnership. The universities also established the **NUS-HUJ Cellular and Molecular Mechanisms of Inflammation Research Programme**, which is a part of the Campus for Research Excellence and Technological Enterprise (CREATE) Programme of Singapore's National Research Foundation.



*L-R: HU Professor Ehud Razin and Professor Menahem Ben-Sasson*



*The Hebrew University and the National University of Singapore (NUS) are offering doctoral degree programs for a core group of biomedical scientists who study at both universities.*

### The Confucius Institute at Hebrew University

A partnership has been formed between **The Hebrew University** and **Shanghai Jiao Tong University** to establish the **Confucius Institute Center at Hebrew University**. The Center will operate in the spirit of Confucius Institutes established at leading universities around the world, and promote Chinese language, culture and history.





## Fiscal Year 2013 Highlights

### The Charles and Suzanne Goodman Building for Brain Sciences

A moving groundbreaking ceremony took place on March 7, 2013, at The Hebrew University of Jerusalem, heralding the construction of the **Charles and Suzanne Goodman Building for Brain Sciences**. The state-of-the-art facility on the Edmond J. Safra Campus at Givat Ram will house **The Edmond and Lily Safra Center for Brain Sciences (ELSC)**.

The new building is named in honor of the **Goodman** and **Crown** families of Chicago. It pays tribute to the philanthropic leadership and commitment of **Suzanne (z"l) Crown Goodman** and **Charles (Corky) Goodman** on behalf of Israel, higher education and the Jewish community worldwide. Corky Goodman, a Governor of The Hebrew University's International Board of Governors and former Chairman of the Board of Governors, participated in the Jerusalem ceremony.

*Rendering of the new home  
of the Edmond and Lily Safra  
Center for Brain Sciences*



*At the groundbreaking ceremony: L-R: Lily Goodman, Jordan Goodman, Danielle Rudas Goodman, Richard Goodman, Charles "Corky" Goodman, Leonard Goodman, Barbara Goodman Manilow and Daniel Goodman*

Joining him for this important occasion were Corky and Suzanne's children: **Richard Goodman, Barbara Goodman Manilow, and Leonard Goodman**; grandchildren: **Lily Goodman, Jordan Goodman** and wife **Danielle**, and **Daniel Goodman**, and cousin, **Sara Star**. More than 100 people attended the ceremony, including Israeli government officials and Hebrew University leaders.

Barbara Goodman Manilow stated at the groundbreaking ceremony: "My father's history with The Hebrew University is a powerful legacy for our family, and our gift symbolizes engaging future generations in his work. It is an honor to name the building after my parents, who exemplify intelligence, generosity and Jewish values. We hope the research that happens here will save the lives of many."

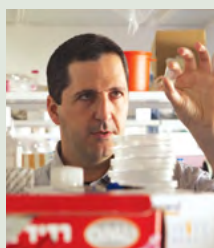
**Professor Eilon Vaadia**, Director of the Edmond and Lily Safra Center for Brain Sciences, stated: "This is another step towards our vision of building an advanced research center that will provide the best technological infrastructure for researchers in brain science. We will be able to continue recruiting outstanding scientists and training the next generation of graduate students in our unique Ph.D. program."

ELSC brings together Hebrew University's brain trust in fields ranging from neurobiology to physiology. Their interdisciplinary work is advancing our understanding of brain function and leading toward new treatments for neurological diseases and injuries.

Designed by the award-winning architects Foster + Partners, the Charles and Suzanne Goodman Building for Brain Sciences comprises two wings with state-of-the-art laboratories and classrooms, an innovative imaging center and areas for biological and pre-clinical research.

## The Alexander Grass Center for Bioengineering

The **Alexander Grass Foundation** provided a generous gift to name The Hebrew University of Jerusalem's Center for Bioengineering and to advance its diverse research activities. **Daniel I. Schlessinger**, President of AFHU, stated: "This magnanimous philanthropy from the Grass Foundation enables Hebrew University



*Dr. Koby Nahmias*

to continue in the forefront of innovation. This gift also strengthens Israel, where the life sciences industry is a fast-growing and vital sector of the nation's economy."

Bioengineering is a multidisciplinary field that relies on the combined expertise of biologists, physicists, chemists and computer science experts. Their knowledge is expanding scientific understanding of biological systems, ranging from the molecular scale to entire organisms, and is producing real-world applications in life sciences and medicine.

*Designing the MetaboShield*



The Alexander Grass Center for Bioengineering draws upon the talents of 30 faculty members. Leading projects include the development of nanotechnology-based diagnostic devices, new medical devices and microchip alternatives to replace animal and human testing in the medical field.

**Dr. Yaakov (Koby) Nahmias**, Director of the Alexander Grass Center, partnered with **Professor Chaim Lotan**, Director of Hadassah Medical Center's Heart Institute and **Professor Dan Galai**, former Dean of HU's Jerusalem School of Business Administration to establish the **Biodesign: Medical Innovation Program** — the first such program in Israel. Medical fellows, bioengineering and business graduate students form teams. Mentored by faculty, they learn how to invent and prototype new innovations and bring these devices to the marketplace.

### Biodesign: Medical Innovation Program

*Israel places first in the number of medical devices patented worldwide. Contributing to this position, Hebrew University's Biodesign: Medical Innovation Program spawned four new start-ups in its first year of existence.*

**SAGIV** is a semi-automatic handheld device designed for rapid and safe IV insertion.



**The Digital Complete Dentures Impression System** is improving the current technology for creating dentures.



**The GuideIn Tube** provides doctors with real-time guidance for the process of tracheal intubation, using an external infrared source.



**The MetaboShield** is an endoscopically inserted gastric sleeve that provides a safe and cost-effective alternative to weight loss surgery.





## THE HEBREW UNIVERSITY OF JERUSALEM

# 76th Annual International Board of Governors Meeting

## Honorary Doctorates

The legendary American actress, director, singer, producer, composer, philanthropist and activist **Barbra Streisand** received an Honorary Doctor of Philosophy degree from The Hebrew University of Jerusalem. The honor was extended in tribute to her professional achievements, humanitarianism, leadership in the realm of human rights and dedication to Israel, The Hebrew University and the Jewish community.

Ms. Streisand established the Emanuel Streisand Building for Jewish Studies on the university's Mount Scopus campus in 1984, during a visit to Israel with the AFHU Los Angeles delegation.



During her 2013 Honorary Doctorate acceptance speech, Ms. Streisand stated, "I wish the world were more like the hallways of The Hebrew University." Her remarks concluded with a quote from Hebrew University founder, Albert Einstein: "Example isn't another way to teach, it's the only way to teach." ■

**Barbra Streisand** accepts an Honorary Doctorate from The Hebrew University on June 17, 2013.

*Each year, Friends of The Hebrew University of Jerusalem are honored at the International Board of Governors meeting in Israel. During 2013, American Friends from all walks of life were recognized for their achievements, support for Israel and for championing the cause of higher education.*



**George A. Schieren** accepts an Honorary Doctorate from The Hebrew University.

**George A. Schieren** received an Honorary Doctorate at the June 16, 2013, convocation held in the Rothberg Amphitheater on Mount Scopus. A forceful advocate for Israel and The Hebrew University, George Schieren most recently served as Chairman of AFHU's national board, before which he served as national President. Along with his wife Ellen, George has led AFHU President's Missions to Israel and spearheaded major events in the New York Region and nationally. In recognition of their extensive leadership, philanthropy and service, the Schierens were honored with the Judah Magnes Award (2013).

George Schieren fulfills varied leadership roles at Hebrew University. He serves as a Governor of the International Board of Governors, as the International Campaign Co-Chair and as a member of the Executive Committee. He sits on the International Board of Overseers of the Rothberg International School, and is a Trustee of The Harry S. Truman Research Institute for the Advancement of Peace.

A partner in the New York office of Gibson, Dunn & Crutcher, George Schieren is a member of the law firm's Securities Litigation, Securities Enforcement, Crisis Management and White Collar Defense and Investigations Practice Groups. ■

## Honorary Fellowships

**Roberta Bogen** was awarded an Honorary Fellowship during a private ceremony at the home of Hebrew University President, **Professor Menahem Ben-Sasson**, on June 4, 2013. A member of AFHU's national Board of Regents, Roberta Bogen has been a driving force behind AFHU's development of the Palm Beach community as well as in New York. The honoree has co-chaired Palm Beach missions to Israel and Scopus Award galas. She has launched Palm Beach scholarship fundraising luncheons and inspired the creation of AFHU's first Annual Leadership Education Forum (ALEF) in the Southeast Region.

Roberta Bogen and her husband **Stanley** are Hebrew University Benefactors and Scopus Award recipients. Among their many important contributions is the establishment of The Roberta and Stanley Bogen Family Visiting Professor Exchange Program between The Hebrew University of Jerusalem and the University of Pennsylvania. ■



*Renae Jacobs-Anson  
was honored on  
June 17, 2013.*

Honorary Fellowship recipient **Renae Jacobs-Anson** of Los Angeles, California, is a member of AFHU's national Board of Directors and the Los Angeles Region Board. Dedicated to the well-being of students, Renae serves as Los Angeles Region Chair for the Student Scholarship Campaign and originated The Chocolate Affaire fundraising event in support of scholarships. For the past five years she has chaired The Bel Air Affaire, an elegant annual fundraising event hosted by **Brindell Gottlieb**.

Renae's devotion to The Hebrew University was instilled in her by her parents, **Benita** and **Dr. Joseph Jacobs (z"l)**, who fostered activities at the Faculty of Dental Medicine. Renae serves as a Governor of the university's International Board of Governors. She and husband, **Dr. David Anson**, and their family are frequent visitors to the university and are recognized on the Wall of Life. ■

*(L-R) Hebrew University President, Professor Menahem Ben-Sasson, presents the Scroll of Honor to Roberta Bogen, accompanied by her husband, Stanley Bogen.*

Honorary Fellowship recipient **David Bruce Smith** of Washington, DC, is an accomplished writer and publisher, who is perpetuating the Smith family's longstanding commitment to The Hebrew University. David, his father **Robert H. Smith (z"l)**, and his grandfather **Charles Smith (z"l)**, have supported the growth of many innovative projects at Hebrew University.

The Smith family has championed sustainable agriculture and environmental conservation research at The Robert H. Smith Faculty of Agriculture, Food and Environment in Rehovot. **The Smith Vision Prize** was established to recognize excellence in research. David Bruce Smith is President of The National Institute for Psychobiology (NIPI) at The Hebrew University.

The active AFHU leader serves on the national Board of Directors. David Bruce Smith is a Governor of The Hebrew University's International Board of Governors and was recognized on Hebrew University's Wall of Benefactors (2013). ■

*David Bruce Smith  
is congratulated  
by Professor  
Menahem  
Ben-Sasson.*





## Hebrew University Benefactors

**Lucille** and **Daniel (z"l) Amster** of Fort Lee, New Jersey, were recognized for the couple's staunch commitment to medical research and quality healthcare as well as for their unwavering support for Hebrew University students. Concerned about animal welfare, Lucille and Daniel Amster have also supported vital work at The Koret School of Veterinary Medicine.

Daniel Amster, a veteran of World War II, died in June 2011. A dynamic attorney and real estate developer, Daniel became Chairman of the Board of Oakland State Bank in New Jersey and was widely respected for his professional achievements and philanthropy. Lucille Amster is a member of AFHU's national Board of Regents, and is integrally involved in diverse Jewish communal, educational and medical causes in the United States and Israel. ■

Lucille Amster



Arthur Gutterman at Benefactors ceremony, June 17, 2013

**Arthur Gutterman** of Highland Park, Illinois, and Boca Raton, Florida, has worked tirelessly on behalf of Israel and the Jewish community. Supportive of higher education and pioneering research at The Hebrew University, the successful businessman and Chairman of Jelmar Inc., serves on AFHU's national board. Arthur is an Associate Governor of The Hebrew University International Board of Governors and participates in missions to Israel.

In memory of his beloved wife **Emalie (z"l)**, Arthur Gutterman established the **Emalie Gutterman Endowed Fund for Medical Research**, which supports work in Chronic Obstructive Pulmonary Disorder (COPD). Arthur and Emalie established the Arthur and Emalie Endowed Scholarship at Chicago's Roosevelt University, where Arthur received his bachelor's degree. He has aided in the work of many organizations and institutions in Illinois and Florida. ■

AFHU Scopus Award laureates, **Lois** and **Martin Zelman** of Palm Beach, Florida, have a profound bond with the Jewish community. Over the decades, the Zelmans have supported a wide array of causes dedicated to Israel and the global Jewish community.

Martin Zelman, the President of Martin Zelman Enterprises, a company specializing in real estate development, is a national board member of AFHU and an Associate Governor of The Hebrew University International Board of Governors. He supports educational, medical and cultural institutions in the United States and Israel. Lois Zelman serves on AFHU's national Board of Regents. The widely admired Jewish communal leader was the youngest member of the UJA-Federation Board in Westchester and the American Jewish Committee. Many charities have benefited from Lois' efforts and leadership. ■



Martin and Lois Zelman

## Guardians: Wall of Life

**Louise Mashal Gabbay** of Fort Lauderdale, Florida, has perpetuated the values of philanthropy and personal achievement that she shared with her beloved husband, **Jacob Gabbay (z"l)**, a successful physician. **The Jacob & Louise Gabbay Foundation** has provided support for scholarships at The Hebrew University. ■



L–R: Dr. Kenneth Gabbay, Dr. Myrna Gabbay and Louise Mashal Gabbay



Joseph and Michelle Jacobs

**Michelle** and **Joseph Jacobs** have actively promoted the well-being of students at The Hebrew University and have provided generous support for the Edmond and Lily Safra Center for Brain Sciences. Residing in Palm Beach, Florida, New York and Greenwich, Connecticut, Michelle and Joseph are prominent in AFHU's Southeast Region. Joseph Jacobs is the President and Co-Founder of Wexford Capital, LLP. Michelle Jacobs established Ashfield Design, a jewelry design company. ■

**Barbara** and **Richard Rothschild** of New York City and Palm Beach, Florida, are esteemed recipients of AFHU's national Scopus Award and active in both communities. The philanthropic couple has co-chaired AFHU galas in Palm Beach and co-chaired the 2013 Palm Beach mission to Israel.

Richard Rothschild is a Senior Vice President at Wells Fargo. Barbara Floersheimer Rothschild, whose career has been in the fashion industry, is the daughter of **Dr. Stephen H. Floersheimer (z"l)** and **Eliane Floersheimer (z"l)**. The family established the Stephen H. Floersheimer Studies at the Institute of Urban and Regional Studies at Hebrew University. ■



Richard and Barbara Rothschild



**The Hebrew University of Jerusalem**  
**76th Annual International Board of Governors Meeting**

## Guardians: Wall of Life

**Dr. Steve Rubinow** of Chicago, Illinois, and his wife **Marlene** are committed to fostering scientific achievement and educational opportunities. To propel these goals, the Rubinows established **The Rubinow Family Scholarship Endowment Fund**, which supports graduate student scholarships in life sciences at The Hebrew University.

Dr. Rubinow is Chief Information Officer, Marketplace Division at Thomson Reuters in New York. Inducted into the CIO Hall of Fame, Dr. Rubinow, who has a Ph.D. in Chemistry and an MBA, has been widely recognized as a leader in the field of information technology. ■



*Dr. Steve Rubinow and  
Professor Menahem Ben-Sasson*



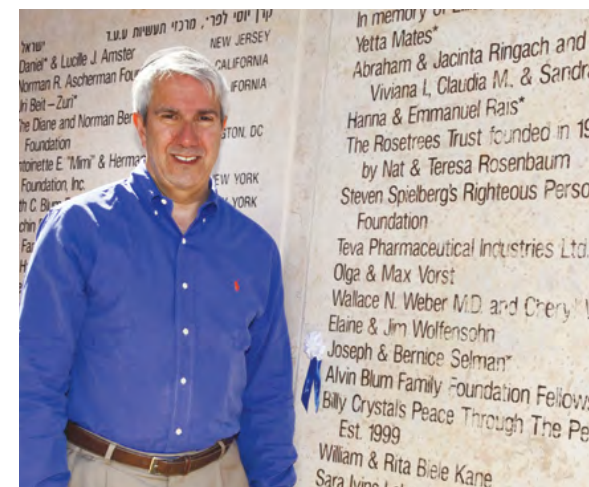
*L–R: Marcy and Daniel Schlessinger, Marcy's niece, Hadar Zamir,  
and sister, Beth Zamir*

**Marcy** and **Daniel I. Schlessinger** of Chicago, Illinois, are dedicated to The Hebrew University. Daniel Schlessinger, a Hebrew University alumnus, was elected National President of AFHU in May 2013, having previously served as Midwest Region President. The prominent attorney received AFHU's Torch of Learning Award in 2010.

Daniel Schlessinger is a Governor of the university's International Board of Governors and serves on its Executive Committee. Marcy, a master gardener, works to beautify the public spaces in Chicago and has introduced gardening into the curriculum of Chicago public schools. ■

**Bernice** and **Dr. Joseph Selman's (z"l)** lives were guided by their concern for Israel. In a loving memorial to his parents, son **Thomas M. Selman** established **The Joseph and Bernice Selman Endowment** to support medical students at The Hebrew University. Thomas traveled to Israel to represent his parents at the Wall of Life ceremony.

Dr. Joseph Selman was a radiologist, author of medical textbooks and one of the founders of the East Texas Cancer Center. Bernice Selman was a hospital laboratory technician with strong ties to the Selman's East Texas community. ■



*Thomas M. Selman*

**The Hebrew University of Jerusalem**  
**76th Annual International Board of Governors Meeting**

## Guardians: Wall of Life

**Judy** and **Robert Snyder** of Palm Beach, Florida, and Washington, DC, have fostered many causes. Dedicated to The Hebrew University, they have led varied AFHU events and programs, including chairing national Scopus Award galas. The Snyders participated in AFHU's first Palm Beach Mission to Rome, Israel and Petra, and co-chaired the community's second mission to Thessaloniki, Bulgaria and Israel. Robert Snyder is the Chairman of the Board of Cambridge Information Group and serves on AFHU's national Board of Regents. Judy Snyder enjoyed a career as a teacher in a private elementary school. ■

*Professor Menahem Ben-Sasson  
 with Robert and Judy Snyder*



## Trustees

Eminent attorney **Jerold (Jerry) Solovy (z"l)** was dedicated to The Hebrew University, AFHU and the Jewish community. The Scopus Award recipient (2008) served on the board of the university's Harry S. Truman Research Institute for the Advancement of Peace, on the AFHU Midwest Regional President's Advisory Committee and on AFHU's national Board of Regents. ■

*Jerold Solovy (z"l)  
 1930 – 2011*



*Alden Solovy pays tribute to his uncle Jerry at the  
 Trustees ceremony in Israel.*

## Founders

For **Jane** and **Peter Willner** of Fairfield, Connecticut, the well-being of the Jewish people and the State of Israel has been a central aspect of their family life. The Willners dedicated their Founders recognition in loving memory of their parents, **Frances** and **Irving Rostholder (z"l)** and **Kurt** and **Margaret Willner (z"l)**, and in honor of their children, **David**, **Nicole** and **Sabra**, and grandchildren, **Josh** and **Maya**.

National Executive Director of AFHU since 2002, Peter Willner has devoted his energies to showcasing The Hebrew University of Jerusalem throughout the United States and raising funds for university priorities. Jane Willner, an active participant in AFHU's mission alongside Peter, is a registered nurse specializing in emergency and surgical nursing. ■



*L–R: Peter Willner, Ambassador Carmi Gillon  
 and Jane Willner*



## Honoring Leadership

### Scopus Award and Truman Peace Prize

#### Southeast Region

On January 20, 2013, in Palm Beach, Florida, **Barbara** and **Richard Rothschild** received AFHU's **National Scopus Award** in recognition of their commitment to Israel and the cause of higher education. Richard Rothschild, a leader in the financial services industry, is a past Vice President and current board member of the Palm Beach Country Club. Barbara Rothschild spent many years devoted to Jewish communal leadership and education. The elegant event at the Breakers Hotel raised scholarship support for Hebrew University students and for the university's Elite Military Medicine Track, which trains doctors for the Israel Defense Forces.



*L-R: Stanley Bogen, Roberta Bogen, Barbara Rothschild, Richard Rothschild, Judy Snyder and Robert Snyder*



*L-R: Ambassador Moshe Arad, George Shultz, Patricia Glaser and Professor Menahem Ben-Sasson*

#### Los Angeles Region

An evening of tribute was held in Los Angeles on March 2, 2013, in honor of the prominent attorney, **Patricia L. Glaser**, **Scopus Award** recipient, and former U.S. Secretary of State **George P. Shultz**, recipient of the **Truman Peace Prize**. The gala attracted 750 guests and raised significant support for student scholarships and The Harry S. Truman Research Institute for the Advancement of Peace at Hebrew University.

Truman Peace Prize recipient, The Honorable George Shultz, is the Thomas W. and Susan B. Ford Distinguished Fellow at Stanford University's Hoover Institution. George Shultz has an Honorary Doctorate from Hebrew University. Throughout his illustrious career, he has received many awards for his leadership, public service and efforts to advance peaceful coexistence in the Middle East and elsewhere.

Patricia Glaser, Chair of the litigation department of Glaser Weil Fink Jacobs Howard Avchen and Shapiro, works tirelessly in support of Hebrew University. She is Vice Chairman of AFHU's Los Angeles Region, serves on AFHU's national board and is a Governor of The Hebrew University of Jerusalem International Board of Governors. She and husband **Sam Mudie** are frequent visitors to the university.

## American Friends of The Hebrew University Events

### Honoring Leadership

## Scopus and Magnes Awards

### Greater New York Region

Distinguished leaders and Hebrew University supporters, **Ellen** and **George Schieren** and **Jane** and **Ron Zimmerman**, received accolades for their philanthropic engagement at a Gala Awards Dinner held in New York on September 11, 2013. Ellen and George Schieren accepted the **Judah Magnes Award** for their outstanding contributions to education and cultural life in the United States and Israel. **National Scopus Award** recipients Jane and Ron Zimmerman were celebrated for their humanitarianism. The event raised support for faculty recruitment at Hebrew University.

George Schieren has been a dedicated AFHU leader, previously serving as Chairman and President. He actively serves on AFHU committees, and he and his wife Ellen have led President's Missions to Israel. A partner at Gibson, Dunn & Crutcher, George has lectured extensively on securities laws, ethics and corporate governance. Ellen Schieren, a former member of AFHU's Greater New York Region board, is a former Director of F.E.G.S. LI, a human services agency, founded Reaching Out Against Eating Disorders (ROAED) and has helped The National Eating Disorders Association.

Ronald Zimmerman, who headed AFHU's Financial and Real Estate Division for more than 30 years, serves on AFHU's national board as a Vice President and member of the Executive and Investment Committees. Ron spent most of his Wall Street career as a partner at Sanford C. Bernstein & Company. Jane Zimmerman is an accomplished businesswoman. Civic and community-minded, Jane has been a volunteer at Temple Beth-El in Great Neck and tutored in the New York City School Volunteer Program.



## Torch of Learning Award

### Greater New York Region

The 43rd **George A. Katz Torch of Learning Award** was conferred upon eminent attorneys **Eric S. Goldstein** and **Stephen D. Susman** on February 13, 2013, in New York. Proceeds from the luncheon benefited the Clinical Legal Education Center at Hebrew University's Faculty of Law.

Eric Goldstein, a partner at Paul, Weiss, Rifkind, Wharton and Garrison LLP, specializes in securities litigation and regulatory enforcement and has represented leading financial institutions. Stephen Susman is the founder of Susman Godfrey, the first law firm in the U.S. to specialize in commercial civil litigation representing both sides of the docket. Both honorees champion a wide array of civic and humanitarian causes.

*At right:*  
*Honorees Stephen D. Susman*  
*and Eric S. Goldstein*



*At left:*  
*L-R: Scopus Award*  
*recipients Ronald and*  
*Jane Zimmerman and*  
*Judah Magnes Award*  
*recipients Ellen and*  
*George Schieren*



## Torch of Learning Awards

### Mid-Atlantic Region



Robert Leff (L) and Kenneth Feinberg (R) present the Torch of Learning Award to Michael D. Hausfeld.

AFHU was privileged to confer the organization's **Torch of Learning Award** upon **Michael D. Hausfeld** on October 16, 2012, during a Washington, D.C. dinner which raised support for Hebrew University's Minerva Center for Human Rights.

The renowned attorney is Chairman of Hausfeld LLP. He is widely known for his work in the fields of human rights, anti-discrimination and antitrust law. Michael Hausfeld was among the first attorneys in the United States to assert that sexual harassment was a form of discrimination under Title VII. He has represented Holocaust victims whose assets were wrongfully retained by private Swiss banks during and after World War II.

## The Humanitarian Torch of Learning Award

### The Bel Air Affaire / Los Angeles Region

The popular Bel Air Affaire was held on September 21, 2013, at "The Milton," the beautiful estate of **Brindell Gottlieb**, AFHU leader, Hebrew University Benefactor, Associate Governor and Honorary Fellowship recipient.

At the *New York Night of Cabaret*, American Friends conferred the **Humanitarian Torch of Learning Award** upon **Ruth Flinkman-Marandy**, Ruth's husband **Ben Marandy** and the actor **Carl Reiner**. The honorees were acknowledged for their many contributions to Israel and The Hebrew University's academic and research community.



Ben Marandy and Ruth Flinkman-Marandy

Ruth Flinkman-Marandy holds an Honorary Fellowship from Hebrew University and is a Benefactor of the university along with her late husband **Stan Flinkman (z"l)**. A member of AFHU's national and Los Angeles Region boards, Ruth is President of Flinkman Management, Inc., a property management company created by Stan Flinkman. Ben Marandy is the founder and owner of the successful Monalisa Limousine Company.

Emmy winner Carl Reiner co-starred on the legendary television comedy, *Your Show of Shows*. He is the creator and co-star of *The Dick Van Dyke Show* and the director and star of feature films.



L-R: Mel Brooks, Brindell Gottlieb and Carl Reiner

## American Friends of The Hebrew University Events

### Honoring Leadership

## Leaders of Distinction

### Midwest Region

Midwest Region Friends honored **Leaders of Distinction, Alison Gutterman, Frances H. Krasnow and Mary Ann Tuft**, at the region's annual scholarship dinner in Chicago on October 18, 2012. The honorees were praised for their professional achievements and activism on behalf of others.

Alison Gutterman is President of Jelmar LLC, a family-owned cleaning products manufacturer based in Skokie, Illinois. Attorney Frances Krasnow is a principal of Fischel & Kahn Ltd. AFHU national board member and Hebrew University Associate Governor, Mary Ann Tuft, is President of the executive search firm Tuft & Associates, Inc. In appreciation for Mary Ann's efforts in support of Hebrew University's School of Nursing, the honoree received a special Lifetime Achievement Award.



*L–R: Alison Gutterman, Midwest Region Board President Bob Wertheimer, Mary Ann Tuft and Frances Krasnow*

## Saluting Leadership and Commitment

### Los Angeles Region

An Evening of Tribute was held in Los Angeles on June 26, 2013, recognizing the following outstanding individuals:

- **Guardians:** Chuck and Hella Hershson and the Estate of Fanny and Henry Samulon
- **Trustees:** Marc and Michelle Rosenbach
- **Founders:** Fred Cowan and Dr. Ellen Graff-Cowan, Anita Lorber and The Sage Group LLC

**Renae Jacobs-Anson**, Hebrew University **Honorary Fellowship** recipient, was celebrated for her contributions, as was **Brindell Gottlieb**, who generously established the Ambassador Carmi Gillon Lectureship at Hebrew University. **Mark S. Vidergauz**, outgoing Los Angeles Region President, and **Joyce Brandman**, Mark's successor and an esteemed university Benefactor and Governor, were lauded for their exemplary service.



*Mark Vidergauz passes the gavel to Joyce Brandman.*

### Midwest Region

On June 27, 2013, Midwest Region Friends held a Donor Recognition Reception in Chicago. They honored the efforts and philanthropy of:

- **Benefactors:** Larry and Nancy Glick
- **Guardian:** Mary Ann Tuft
- **Trustee:** Roslyn Flegel
- **Founder:** Frances Krasnow

**Michael Freed**, a member of AFHU's national and regional boards and a Hebrew University Governor, led a memorial observance in tribute to region board members, **Mary G. Oppenheim (z"l)** and **A. Sidney Katz (z"l)**. Sidney's children, **Michele Katz-Rosenblum** and **Aaron Katz**, attended the moving ceremony with their spouses, **Dr. Jason Rosenblum** and **Christine Katz**.



*L–R: AFHU Benefactors Larry and Nancy Glick with AFHU Guardian Michael Freed*



## Special Events

### Educational Forums in AFHU Regions

*ALEF in Palm Beach: Forging New Frontiers, Transcending New Challenges*



*Dr. Ami Citri of the Edmond and Lily Safra Center for Brain Sciences (ELSC), Sheldon Hechtman, AFHU Southeast Region President, Professor Eilon Vaadia, ELSC Director and Ellen Klersfeld, AFHU National and Southeast Region Board Member*

*ALEF in Los Angeles: Spearheading Progress for Israel and the World*



*Rob Eshman, Middle East politics panel moderator and LA Jewish Journal editor; Professor Steven Spiegel, Director of the Center for Middle East Development at UCLA; Hebrew University Professor Reuven Hazan; and David Lehrer, ALEF Chair*

### The Palm Beach Mission to Thessaloniki, Bulgaria and Israel

Southeast Region Friends embarked on a unique exploration of Jewish history and heritage during the **Palm Beach Mission**, May 28 – June 8, 2013. Participants traveled to Thessaloniki, the second largest city in Greece and the capital of Central Macedonia, and to Bulgaria, home to abundant archaeological treasures. Capping the journey was a visit to Israel and The Hebrew University of Jerusalem. Highlights included private meetings with political dignitaries and government officials and VIP receptions with Hebrew University President, **Professor Menahem Ben-Sasson** and other university leaders.

*Mission participants at The Hebrew University's Mount Scopus campus with President Ben-Sasson (far left) and former Vice President Carmi Gillon (seated far right).*



## AFHU National & Regional Offices

### Greater New York Region

One Battery Park Plaza  
25th Floor  
New York, NY 10004

**T:** 212.607.8511  
**T:** 800.567.AFHU (2348)  
**F:** 212.809.4184

[greaterny@afhu.org](mailto:greaterny@afhu.org)

**Contact:** Suzanne K. Ponsot  
Executive Director

### New Jersey Region

P.O. Box 477  
Wyckoff, NJ 07481

**T:** 201.399.3701  
**F:** 201.731.0155

[mhartman@afhu.org](mailto:mhartman@afhu.org)

**Contact:** Michelle L. Hartman, Ph.D.  
Executive Director

### Mid-Atlantic Region

5100 Wisconsin Avenue NW  
Suite 250  
Washington, DC 20016

**T:** 202.363.4600  
**F:** 202.363.4651

[midatlantic@afhu.org](mailto:midatlantic@afhu.org)

**Contact:** Frandee R. Woolf  
Executive Director

### Southeast Region

100 West Cypress Creek Road  
Suite 865  
Fort Lauderdale, FL 33309

**T:** 561.750.8585  
**T:** 800.899.AFHU (2348)  
**F:** 561.750.8292

[southeast@afhu.org](mailto:southeast@afhu.org)

**Contact:** Monica Loebel  
Executive Director

### Midwest Region

500 N. Michigan Avenue  
Suite 1530  
Chicago, IL 60611

**T:** 312.329.0332  
**T:** 877.642.AFHU (2348)  
**F:** 312.329.0334

[midwest@afhu.org](mailto:midwest@afhu.org)

**Contact:** Judith Shenkman  
Executive Director

### Los Angeles Region

11500 West Olympic Boulevard  
Suite 512  
Los Angeles, CA 90064

**T:** 310.843.3100  
**T:** 800.916.9998  
**F:** 310.843.3109

[westcoast@afhu.org](mailto:westcoast@afhu.org)

**Contact:** Matthew Ross  
Executive Director

### Orange County, San Diego and the Desert Office

P.O. Box 364  
Placentia, CA 92871

**T:** 949.407.6547  
**F:** 949.625.5151

[cberkley@afhu.org](mailto:cberkley@afhu.org)

**Contact:** Caron S. Berkley  
Director

### Pacific Northwest Region

591 Redwood Highway  
Suite 2310  
Mill Valley, CA 94941

**T:** 415.231.6720  
**F:** 415.299.8693

[vsilverman@afhu.org](mailto:vsilverman@afhu.org)

**Contact:** Victoria Silverman  
Executive Director

### National Office

One Battery Park Plaza  
25th Floor  
New York, NY 10004

**T:** 212.607.8500  
**T:** 800.567.AFHU (2348)  
**F:** 212.809.4430

[info@afhu.org](mailto:info@afhu.org)  
[www.afhu.org](http://www.afhu.org)

**Contact:** Beth Asnien McCoy  
National Executive Director  
[bmccoy@afhu.org](mailto:bmccoy@afhu.org)

**Contact:** James L. Rothkopf  
Chief Financial Officer  
[jrothkopf@afhu.org](mailto:jrothkopf@afhu.org)

**Contact:** Joyce Grossman, Ph.D.  
National Executive Director,  
Marketing Communications  
**T:** 212.607.8540  
[jgrossman@afhu.org](mailto:jgrossman@afhu.org)

**Contact:** Irena Krakhman  
Director of Governance  
and External Relations  
**T:** 212.607.8532  
[ikrakhman@afhu.org](mailto:ikrakhman@afhu.org)



## 2012–2013 AFHU National Officers *(As of December 11, 2012)*

### President

Martin E. Karlinsky

### Chairman of the Board

George A. Schieren

### Vice Chairmen of the Board

Lawrence E. Glick  
Mark R. Gordon  
Frances R. Katz  
Michael S. Kurtz  
Richard S. Ziman

### Chairman of the Executive Committee

Michael J. Freed

### Vice Presidents

Ernest Bogen  
Rita Bogen  
Ambassador William A. Brown  
Charles H. Goodman  
Michael G. Jesselson  
Todd S. Lundy  
Kenneth L. Stein  
Ronald M. Zimmerman

### National Campaign Chair

Daniel I. Schlessinger

### Treasurer

Michael A. Lobel

### Assistant Treasurer

Joshua M. Olshin

### Secretary

Pamela N. Emmerich

### Assistant Secretary

Richard D. Weinberg

### Honorary Presidents

Stanley M. Bogen  
Amb. Max M. Kampelman (z"l)  
Harvey M. Krueger  
Fred S. Lafer (z"l)  
Senator Frank R. Lautenberg (z"l)  
Barbara A. Mandel  
Keith L. Sachs  
George A. Schieren  
Ira Lee Sorkin

### Honorary Chairmen of the Board

Stanley M. Bogen  
Amb. Max M. Kampelman (z"l)  
Harvey M. Krueger  
Fred S. Lafer (z"l)  
Keith L. Sachs  
Ira Lee Sorkin

### Honorary Vice Presidents

Harold Berry (z"l)  
D. Walter Cohen  
Leonie J. Darwin (z"l)  
Martin Hecht  
Sanford F. Kuvin  
Bess Myerson  
Theodore K. Rabb  
Rabbi Stanley Rabinowitz (z"l)  
Herbert L. Sachs  
David Shapell  
Charles A. Stillman  
Dan K. Wassong  
Stanley R. Zax

## 2012–2013 AFHU Committees *(As of December 11, 2012)*

### Executive Committee

#### Chairman

Michael J. Freed

#### Committee

Ernest Bogen  
Rita Bogen  
Stanley M. Bogen  
Pamela N. Emmerich\*  
Alan P. Fiske  
Lawrence E. Glick  
Mark R. Gordon  
Emma J. Joels  
Clive P. Kabatznik  
Martin E. Karlinsky\*  
Frances R. Katz  
Harvey M. Krueger  
Michael A. Lobel  
Todd S. Lundy  
Barbara A. Mandel  
James E. Matanky  
Joshua M. Olshin  
Keith L. Sachs  
George A. Schieren  
Daniel I. Schlessinger  
Ira Lee Sorkin  
Kenneth L. Stein  
Richard S. Ziman  
Ronald M. Zimmerman

### Invited Guests

*All regional presidents*

*Greater New York:*

Lawrence J. Zweifach

*Los Angeles:* Mark S. Vidergauz

*Mid-Atlantic:* Nancy Hamburger

*Midwest:* Daniel I. Schlessinger

*New Jersey:* Michael S. Kurtz

*Ohio:* Scott R. Burg

*Pacific Northwest:* Eric C. Stein

*Southeast:* Sheldon Hechtman

### Budget and Finance Committee

#### Chairman

Michael A. Lobel

#### Committee

Stanley M. Bogen  
Mark R. Gordon  
Martin E. Karlinsky\*  
Michael S. Kurtz  
Barry H. Lippman  
Barbara A. Mandel  
Joshua M. Olshin  
George A. Schieren  
Ira Lee Sorkin

### Management Committee

#### Special Appointment

#### Chairman

Martin E. Karlinsky

#### Committee

Rita Bogen  
Stanley M. Bogen  
Pamela N. Emmerich  
Alan P. Fiske  
Michael J. Freed  
Mark R. Gordon  
Emma J. Joels  
Clive P. Kabatznik  
Frances R. Katz  
Harvey M. Krueger  
Michael S. Kurtz  
Michael A. Lobel  
Barbara A. Mandel  
Keith L. Sachs  
George A. Schieren  
Daniel I. Schlessinger  
Ira Lee Sorkin  
Kenneth L. Stein

### Campaign Committee

#### Chairman

Daniel I. Schlessinger

#### Committee

Rita Bogen  
Stanley M. Bogen  
Joyce Brandman  
I. Steve Edelson  
Pamela N. Emmerich  
Michael J. Freed  
Patricia L. Glaser  
Neal Grossman  
Nancy Hamburger  
Sheldon Hechtman  
Clive P. Kabatznik  
Martin E. Karlinsky\*  
Frances R. Katz  
Michael S. Kurtz  
Barbara A. Mandel  
Keith L. Sachs  
George A. Schieren  
David Bruce Smith  
Ira Lee Sorkin  
Eric C. Stein  
Kenneth L. Stein  
Mark S. Vidergauz  
Richard S. Ziman

### Investment Committee

#### Chairman

Kenneth L. Stein

#### Committee

Richard Abramson  
Stanley M. Bogen  
Mark R. Gordon  
Clive P. Kabatznik  
Martin E. Karlinsky\*  
Ellen Klersfeld  
Michael S. Kurtz  
Michael A. Lobel\*  
Marc O. Mayer  
Ira Lee Sorkin  
Ronald M. Zimmerman

*\*Ex-officio*

*2012–2013 AFHU Committees  
continued on next page. ▶*



## Audit Committee

### Chairman

Alan P. Fiske

### Committee

Mark R. Gordon  
 Martin E. Karlinsky\*  
 Michael S. Kurtz  
 Michael A. Lobel\*  
 Marc O. Mayer  
 Keith L. Sachs  
 George A. Schieren  
 Ira Lee Sorkin  
 Kenneth L. Stein\*

## Nominations Committee

### Chairman

Ira Lee Sorkin

### Committee

Stanley M. Bogen  
 Lawrence E. Glick  
 Nancy Hamburger  
 Renae Jacobs-Anson  
 Martin E. Karlinsky\*  
 Michael S. Kurtz  
 Barbara A. Mandel  
 Keith L. Sachs  
 George A. Schieren  
 Daniel I. Schlessinger  
 Eric C. Stein

## Grants Committee

### Chairman

Emma J. Joels

### Committee

Ernest Bogen  
 Ellen S. Gendal  
 John A. Golieb  
 Nancy Hamburger  
 Helen Jacobs-Lepor  
 Martin E. Karlinsky\*  
 Joshua M. Olshin  
 George A. Schieren  
 Daniel I. Schlessinger

## Compensation Committee

### Chairman

George A. Schieren

### Committee

Michael A. Lobel  
 Martin E. Karlinsky

*\*Ex-officio*

## 2012 AFHU Board of Directors

*As of December 11, 2012*

John H. Bauman – NY  
 Diane B. Belfer – FL  
 James Blum – NY  
 Ernest Bogen – FL  
 Rita Bogen – FL  
 Stanley M. Bogen – NY  
 Joyce Brandman – CA  
 • Scott R. Burg – OH  
 Leonard D. Cordes – FL  
 I. Steven Edelson – IL  
 Pamela N. Emmerich – NY  
 Alan P. Fiske – FL  
 Ruth Flinkman-Marandy – CA  
 Michael J. Freed – IL  
 Patricia L. Glaser – CA  
 Lawrence E. Glick – IL  
 Steven C. Good – CA  
 Charles H. Goodman – IL  
 Mark R. Gordon – NY  
 Brindell Gottlieb – CA  
 Arthur Gutterman – FL  
 • Nancy Hamburger – MD

• Indicates Regional President

• Sheldon Hechtman – FL  
 William H. Isacoff – CA  
 Renae Jacobs-Anson – CA  
 Michael G. Jesselson – NY  
 Emma J. Joels – FL  
 Marvin Jubas – CA  
 Clive P. Kabatznik – FL  
 Amb. Max M. Kampelman (z"l) – DC  
 Martin E. Karlinsky – NY  
 Brad S. Karp – NY  
 Frances R. Katz – NY  
 Ellen Klersfeld – FL  
 Harvey M. Krueger – NY  
 • Michael S. Kurtz – NJ  
 Fred S. Lafer – NJ  
 Senator Frank R. Lautenberg (z"l) – NJ  
 Maria Lerner Tanenbaum – MD  
 Barry H. Lippman – CA  
 Michael A. Lobel – NY  
 Todd S. Lundy – IL  
 Barbara A. Mandel – FL  
 Mindy Mann – CA  
 James E. Matanky – IL  
 Mark O. Mayer – NY  
 Jamie McCourt – CA  
 Joshua M. Olshin – NY  
 Mark A. Ratner – IL

Leona Z. Rosenberg – IL  
 Keith L. Sachs – PA  
 George A. Schieren – NY  
 • Daniel I. Schlessinger – IL  
 David Bruce Smith – MD  
 Ira Lee Sorkin – NY  
 • Eric C. Stein – CA  
 Kenneth L. Stein – NY  
 Ruthellen Toole – CA  
 Mary Ann Tuft – IL  
 • Mark S. Vidergauz – CA  
 Richard D. Weinberg – NY  
 Martin Zelman – FL  
 Richard S. Ziman – CA  
 Ronald M. Zimmerman – NY  
 • Lawrence J. Zweifach – NY

## Presidents of Regional Boards

Scott R. Burg – OH  
 Nancy Hamburger – MD  
 Sheldon Hechtman – FL  
 Michael S. Kurtz – NJ  
 Daniel I. Schlessinger – IL  
 Eric C. Stein – CA  
 Mark S. Vidergauz – CA  
 Lawrence J. Zweifach – NY

**2012 AFHU  
Board of Regents**

*As of December 11, 2012*

Elkan Abramowitz – NY  
Kenneth Abramowitz – NY  
Nira Abramowitz – NY  
Richard Abramson – NY  
Isabell Adler – FL  
Susi Annes – FL  
Onnie Baron – CA  
Larry Behar – FL  
Robert A. Belfer – NY  
Linda Bennett – CA  
Sol Berg – MA  
Robert M. Berger – IL  
Alan Bloch – CA  
Roberta Bogen – NY  
Nancy Brizel – FL  
Jonathan Brodie – MD  
Ambassador William A. Brown – VA  
Mike Burstyn – CA  
Sara Shemin Cass – NY  
Richard Z. Chesnoff – NY  
Henry Citron – NY  
Leonard Cohn — CA  
Victor J. Cohn – OH  
Sylvia Cohodas – FL  
Willard L. Cohodas – FL  
Michael Cypers – CA  
Gabriella de Beer – NY

Judith B. Deich – NY  
Robert A. Densen – NJ  
Ralph S. Dweck – MD  
Sheryl Dworkin – IL  
Helen E. Eisenberg – FL  
Ariel Elia – FL  
Adam O. Emmerich – NY  
Sherry Endelson – FL  
Michael J. Foley – NY  
Rabbi Robert Frazin – FL  
Sarita Gantz – FL  
Susie R. Gelman – MD  
Ellen S. Gendal – FL  
Susan A. Gitelson – NY  
Andrew M. Glick – IL  
Ralph I. Goldman – NY  
John A. Golieb – NY  
Neil Grossman – NY  
Alex Halberstein – FL  
Charles H. Hershson – CA  
Henry Hirschowitz – CA  
Harris N. Hollin – FL  
Susan B. Isaacson – IL  
Benita Jacobs – CA  
Helen Jacobs-Lepor – CA  
Melvin Katten – IL  
Amy Katz – NY  
Myron Kaufman – FL  
Vivian Kaufman – CA  
Barbara Kay – FL  
Rabbi Arthur Kolatch – CA  
Paul Kramer – FL

Harriet Lainer – NJ  
William K. Langfan – FL  
Paul Lewis – NY  
Stephen E. Lieberman – MN  
Harold Magid – NY  
Joel Mandel – CA  
Ronald I. Mandle – NY  
Sonia Marschak – IL  
Isidore Mayrock – NY  
Sidney Moray – CA  
Bernice Mossafer-Rind – WA  
Marcie Natan – NY  
Murray Neidorf – CA  
Sherry Norris – NY  
Mary Oppenheim – IL  
Leonard Polonsky – U.K.  
Ruth W. Popkin – NY  
Donald Rabinovitch – NY  
Margaret Richek-Goldberg – IL  
Rachel Ringler – NY  
Elliot J. Roth – IL  
Walter Roth – IL  
Richard Rothschild – FL  
Jack A. Rounick – PA  
Paul T. Saharack – IL  
Sam Sallerson – IL  
Sanford J. Schlesinger – NY  
Daniel J. Schultz – NJ  
Howard Schwimmer – CA  
Mitchell Shadowitz – FL  
Yehuda Shalon – CA  
Martin C. Shapiro – CT

Robert L. Shuftan – IL  
Seth Siegel – NY  
Lynne Silbert – CA  
David E. Simon – IN  
Rita Simon – MD  
Linda Slucker – NY  
Robert Snyder – FL  
Jack Solomon — UT  
Maria Spinak – FL  
Michael Stein – FL  
Marilyn Sternberg – IL  
Alan Swerdloff – NY  
Deborah Taubman – CA  
Irving Taylor – MD  
Andrew H. Tisch – NY  
Evelene Wechsler – NY  
Robert L. Wechsler (z"l) – NY  
Martin Weinberg – FL  
Jerome A. Weinberger — OH  
Eleanor Weiner – FL  
Paul Weiner – FL  
Robert L. Wertheimer – IL  
Rita Wolfson – FL  
Elysa Yanowitz — CA  
Robert Zeff – FL  
Susan Zeff – FL  
Lois Zelman — FL



## The Hebrew University of Jerusalem International Board of Governors

*As of September 2012*

Mrs. Kathleen Barnett – IL  
Mrs. Rita Bogen – FL  
Mr. Stanley M. Bogen – NY  
Mrs. Joyce Brandman – CA  
Mrs. Pamela N. Emmerich – NY  
Mr. Gerald Fishbach – NY  
Mr. Alan P. Fiske – FL  
Mr. Michael J. Freed – IL  
Ms. Susie Gelman – MD  
Ms. Patricia L. Glaser – CA  
Mr. Charles H. Goodman – IL  
Mr. Mark R. Gordon – NY  
Ms. Renae Jacobs-Anson – CA  
Ms. Emma J. Joels – FL  
Mr. Clive P. Kabatznik – FL  
Mr. Martin E. Karlinsky – NY  
Mrs. Frances R. Katz – NY  
Ms. Ellen Klersfeld – FL  
Mr. Harvey M. Krueger – NY  
Mr. Michael S. Kurtz – NJ  
Ms. Maria Lerner Tanenbaum – MD  
Mr. Barry H. Lippman – CA  
Mr. Michael A. Lobel – NY  
Mrs. Barbara A. Mandel – FL  
Mr. James E. Matanky – IL  
Ms. Heidi Rothberg – CO  
Mr. Jack Rozen

Mr. Keith L. Sachs – PA  
Mr. George A. Schieren – NY  
Mr. Daniel I. Schlessinger – IL  
Mr. David Bruce Smith – MD  
Ms. Michelle Smith – DC  
Mr. Ira Lee Sorkin – NY  
Mr. Kenneth L. Stein – NY  
Mr. Mark S. Vidergauz – CA  
Mr. Richard S. Ziman – CA

### Associate Governors

Mr. John H. Bauman – NY  
Mrs. Diane B. Belfer – FL  
Ms. Linda Bennett – CA  
Mrs. Nancy Berman Bloch – CA  
Mr. Alan Bloch – CA  
Mr. Victor J. Cohn – OH  
Ms. Gabriella de Beer – NY  
Mr. Robert A. Densen – NJ  
Mr. I. Steve Edelson – IL  
Ms. Helen Eisenberg – FL  
Mrs. Brindell Gottlieb – CA  
Mr. Arthur Gutterman – FL  
Mr. Alex Halberstein – FL  
Ms. Nancy Hamburger – MD  
Mr. Sheldon Hechtman – FL  
Dr. William H. Isacoff – CA

Mr. Marvin Jubas – CA  
Mr. Marc Mayer – NY  
Ms. Jamie McCourt – CA  
Mr. Joshua M. Olshin – NY  
Ms. Leona Z. Rosenberg – IL  
Mr. Eric C. Stein – CA  
Ms. Mary Ann Tuft – IL  
Mr. Jerome A. Weinberger – OH  
Mr. Neil C. Weinberger – OH  
Mr. Robert Zeff – FL  
Mr. Martin Zelman – FL

### Honorary Governors

Mrs. Madlyn Barnett – TX  
Mr. Harold Berry – MI  
Mr. Ernest Bogen – FL  
Mrs. Sulana Ross Chait – CA  
Dr. D. Walter Cohen – PA  
Mr. Willard L. Cohodas – FL  
Ms. Leonie J. Darwin (z"l) – CA  
Mr. Ariel Elia – FL  
Mr. Richard L. Freundlich – NY  
Mr. Morton Fungier – MD  
Dr. Susan A. Gitelson – NY  
Mr. Lawrence E. Glick – IL  
Mr. Jay N. Goldberg – NY  
Mr. Martin Hecht – CA  
Mr. David B. Holtzman – MI  
Mrs. Charlotte Jacobson – FL  
Mr. Michael G. Jesselson – NY

Mr. Burton M. Joseph – MN  
Dr. Max M. Kampelman (z"l) – DC  
Mr. William B. Konar – NY  
Mr. Fred S. Lafer (z"l) – NJ  
Mr. Nathan Lipson – GA  
Mr. Robert Low – NY  
Mr. Todd S. Lundy – IL  
Mr. Morton Mandel – FL  
Mrs. Bernice Mossafer Rind – WA  
Mrs. Ruth Popkin – NY  
Prof. Theodore K. Rabb – NJ

Professor Mark Ratner – IL  
Prof. Henry Rosovsky – MA  
Mr. Jack Rudin – NY  
Mr. Floyd A. Segel – CO  
Mr. Leonard I. Shankman – NY  
Mr. Jerome J. Shestack – PA  
Mr. Thaddeus N. Taube – CA  
Prof. Michael Walzer – NJ  
Prof. Julian Wolpert – NJ  
Mr. Gordon Zacks – OH

## The Harry S. Truman Research Institute for the Advancement of Peace at The Hebrew University of Jerusalem

AFHU elected members to the  
Truman Board of Trustees, divided  
into 3 three-year terms, currently  
serving through:

### 2013

Stanley M. Bogen – NY  
Alan P. Fiske – FL  
Barbara A. Mandel – FL

### 2014

Lawrence E. Glick – IL  
Harvey M. Krueger – NY

### 2015

Ernest Bogen – FL  
Michael S. Kurtz – NJ  
George A. Schieren – NY  
Ira Lee Sorkin – NY

### Honorary Members

Amb. William A. Brown – VA  
Todd S. Lundy – IL

### Ex-Officio Member

Martin E. Karlinsky,  
AFHU President – NY

## AFHU Executive Management



AMERICAN FRIENDS OF  
THE HEBREW UNIVERSITY

### **National Executive Director**

Beth Asnien McCoy

### **Chief Financial Officer**

James L. Rothkopf

### **Controller**

Jane Kampton





**American Friends of the Hebrew University, Inc.**  
**Consolidated Statements of Financial Position**

*As of September 30, 2013 and 2012*  
*(in thousands)*

	2013	2012
<b>Assets</b>		
Cash and cash equivalents	\$10,639	\$15,464
Contributions receivable, net	26,050	28,645
Interest receivables and other assets	745	1,003
Marketable securities and other investments	489,573	458,278
Investment in split-interest agreements	14,582	11,706
State of Israel bonds	2,575	2,734
Real estate holdings	2,865	2,865
Assets of trusts and other split interest agreements held by others	33,983	30,981
Fixed assets, net	318	480
<b>Total assets</b>	<b>\$581,330</b>	<b>\$552,156</b>
<b>Liabilities and Net Assets</b>		
<b>Liabilities:</b>		
Accounts payable and accrued liabilities	\$1,871	\$1,983
Liability under split interest agreements	7,764	6,319
Due to Hebrew University	23,941	25,214
<b>Total liabilities</b>	<b>33,576</b>	<b>33,516</b>
<b>Net Assets:</b>		
Unrestricted	5,270	7,120
Temporarily restricted	207,056	182,811
Permanently restricted	335,428	328,709
<b>Total net assets</b>	<b>547,754</b>	<b>518,640</b>
<b>Total liabilities and net assets</b>	<b>\$581,330</b>	<b>\$552,156</b>



**American Friends of the Hebrew University, Inc.**  
**Consolidated Statements of Activities**

*For the years ended September 30, 2013 and 2012*  
*(in thousands)*

	2013	2012
<b>Support and Revenue</b>		
Support:		
Contributions	\$22,767	\$26,228
Legacies and bequests	6,128	8,027
Total support	28,895	34,255
Revenue:		
Net investment income	58,310	72,017
Changes in value of split-interest agreements	570	2,307
Total support and revenue	87,775	108,579
<b>Expenses</b>		
Programs services:		
Grants to Hebrew University	46,727	34,963
Grants to other charitable and educational institutions in the United States and Israel	241	361
Total program services	46,968	35,324
<b>Supporting Services:</b>		
Management and general:	3,574	3,422
Fundraising	8,119	7,602
Total supporting services	11,693	11,024
Total expenses	58,661	46,348
Change in net assets	29,114	62,231
<b>Net Assets:</b>		
Beginning of year	518,640	456,409
<b>End of year</b>	<b>\$547,754</b>	<b>\$518,640</b>









[www.afhu.org](http://www.afhu.org)



[info@afhu.org](mailto:info@afhu.org)



[www.facebook.com/AmFriendsHU](http://www.facebook.com/AmFriendsHU)



[twitter.com/AmFriendsHU](https://twitter.com/AmFriendsHU)



[www.youtube.com/AmFriendsHU](http://www.youtube.com/AmFriendsHU)

**American Friends of The Hebrew University**

One Battery Park Plaza  
25th Floor  
New York, NY 10004

Telephone: 212.607.8500  
Toll Free: 800.567.AFHU (2348)